

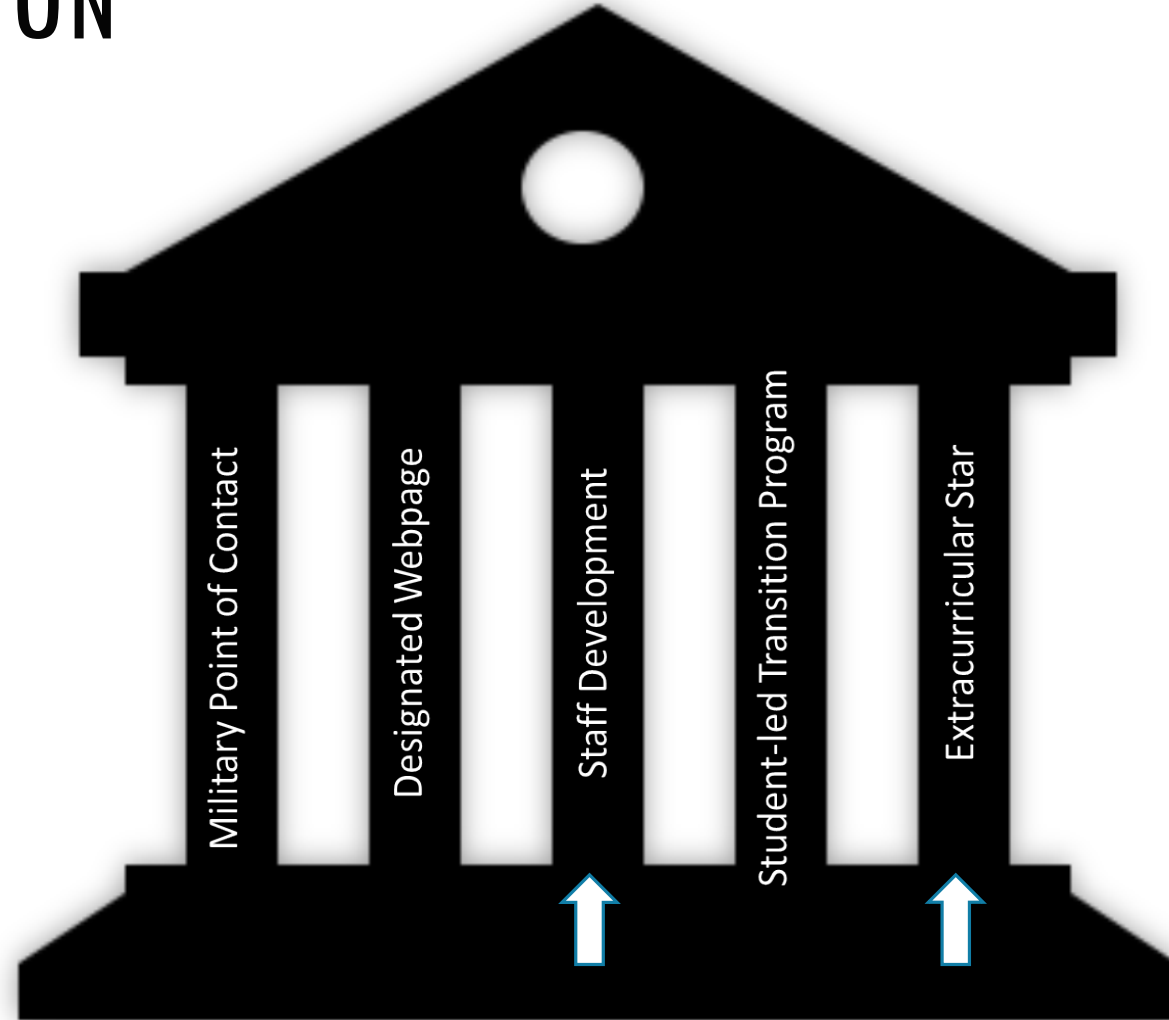


BLANKET SUPPORT FOR PURPLE STAR SCHOOLS OF DISTINCTION

FDA

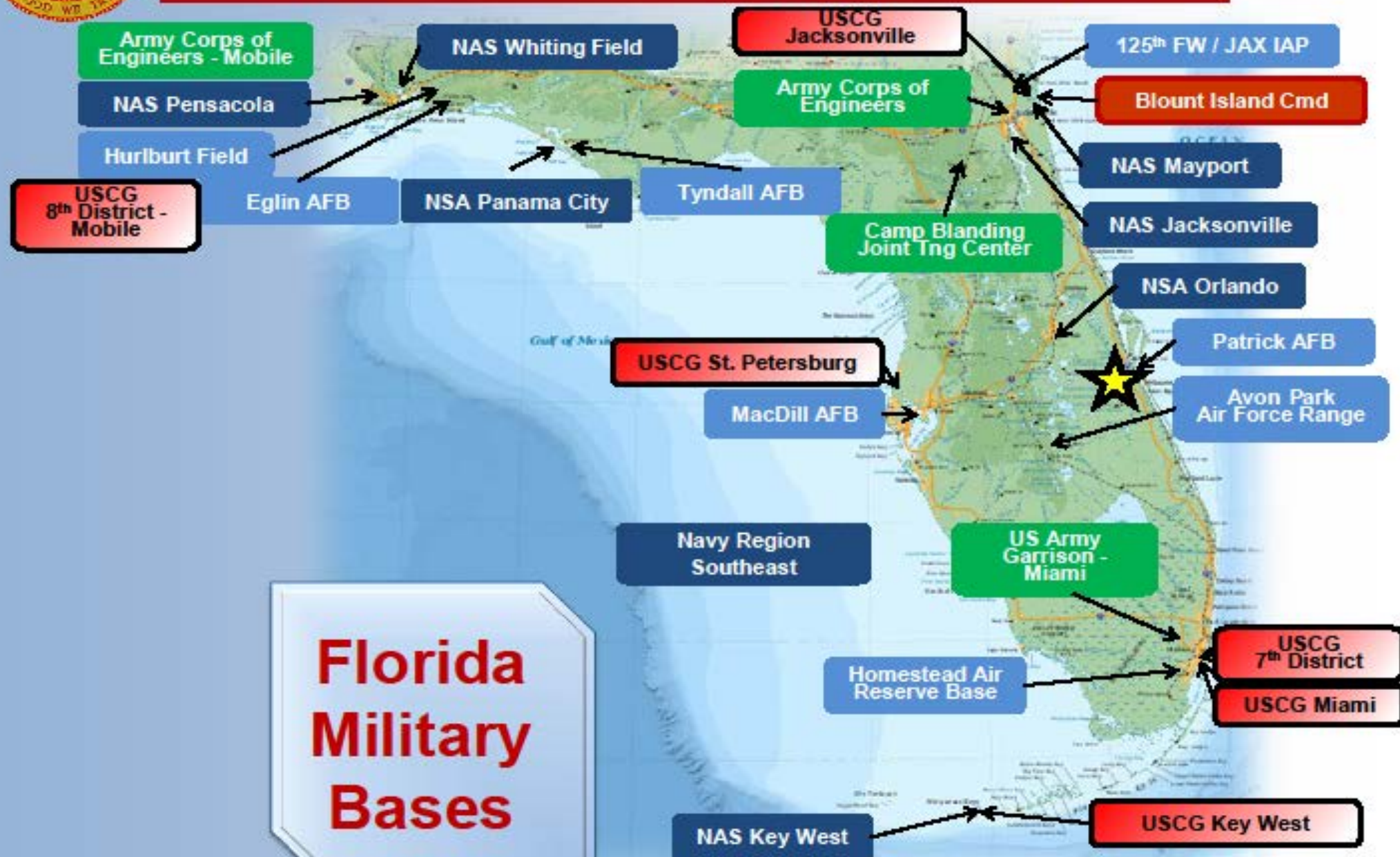
Family Support Working Group

GOAL: PROVIDE SCHOOLS THROUGHOUT THE STATE WITH ASSISTANCE WHEN SEEKING THE PURPLE STAR DISTINCTION





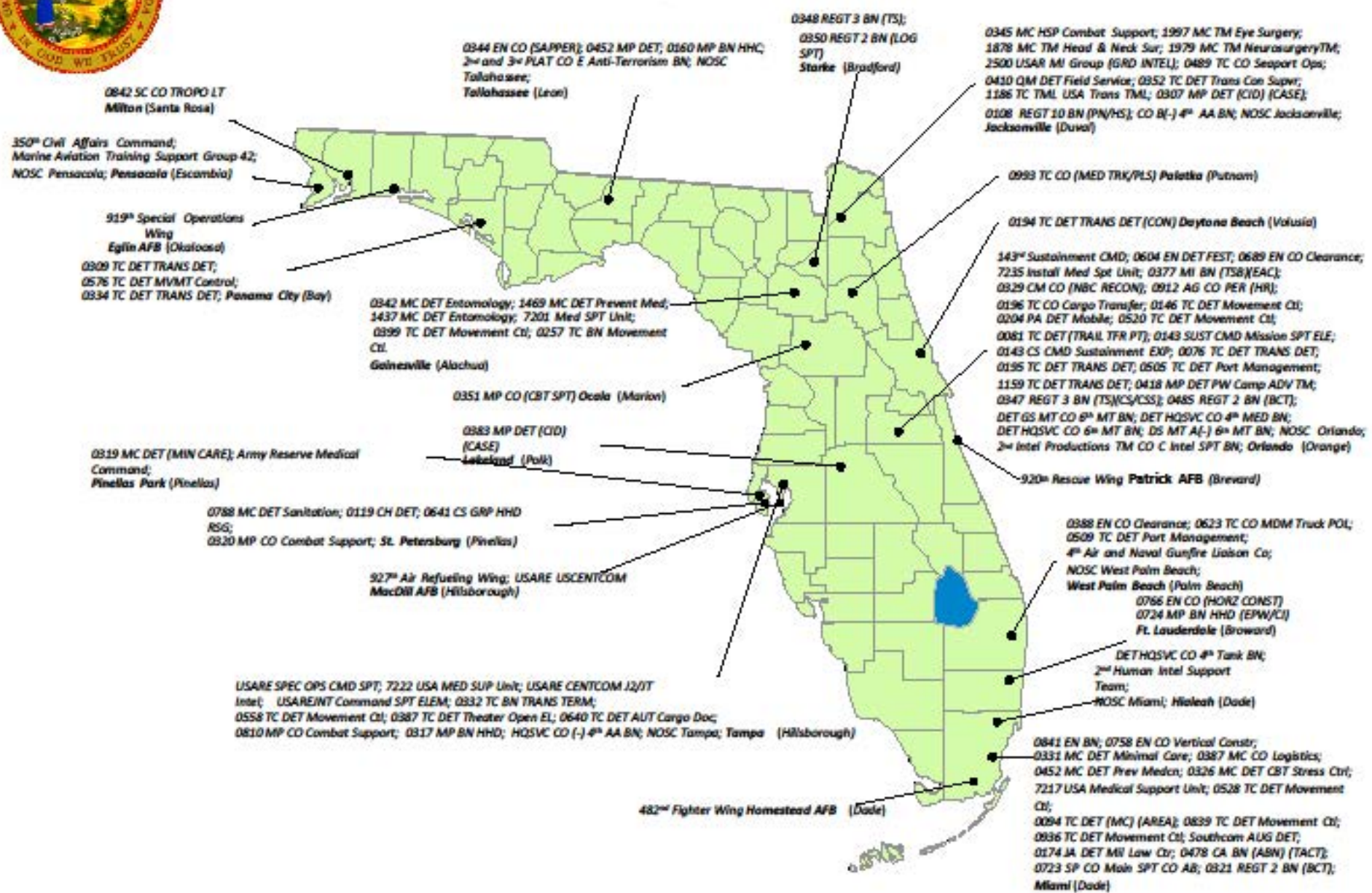
State of Florida



**Florida
Military
Bases**

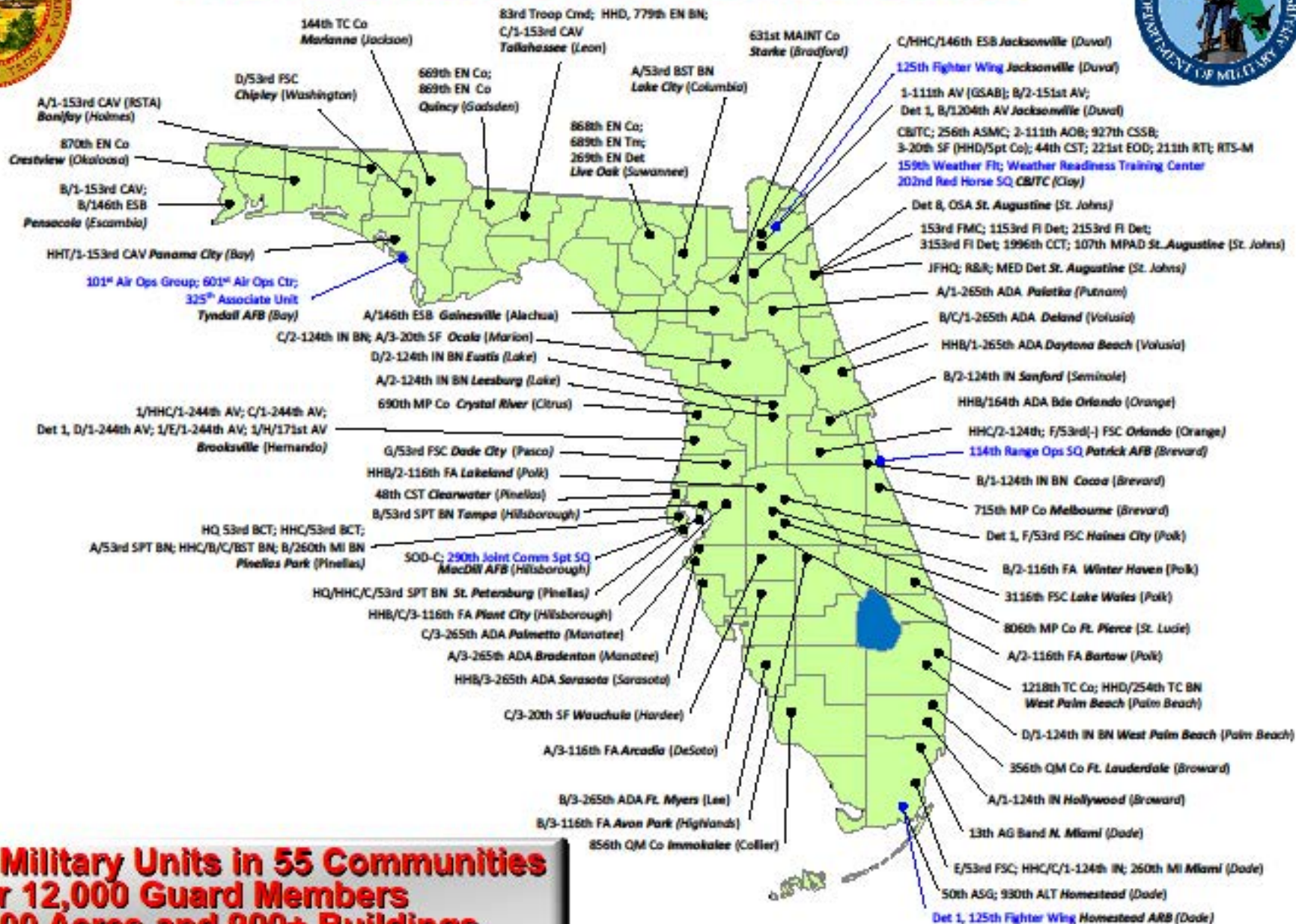


Florida Military Reserve Units





Florida National Guard Units



MILITARY SCHOOL LIAISONS DESIGNATED AREA OF RESPONSIBILITY (AOR)

Can the schools count on School Liaisons for training?

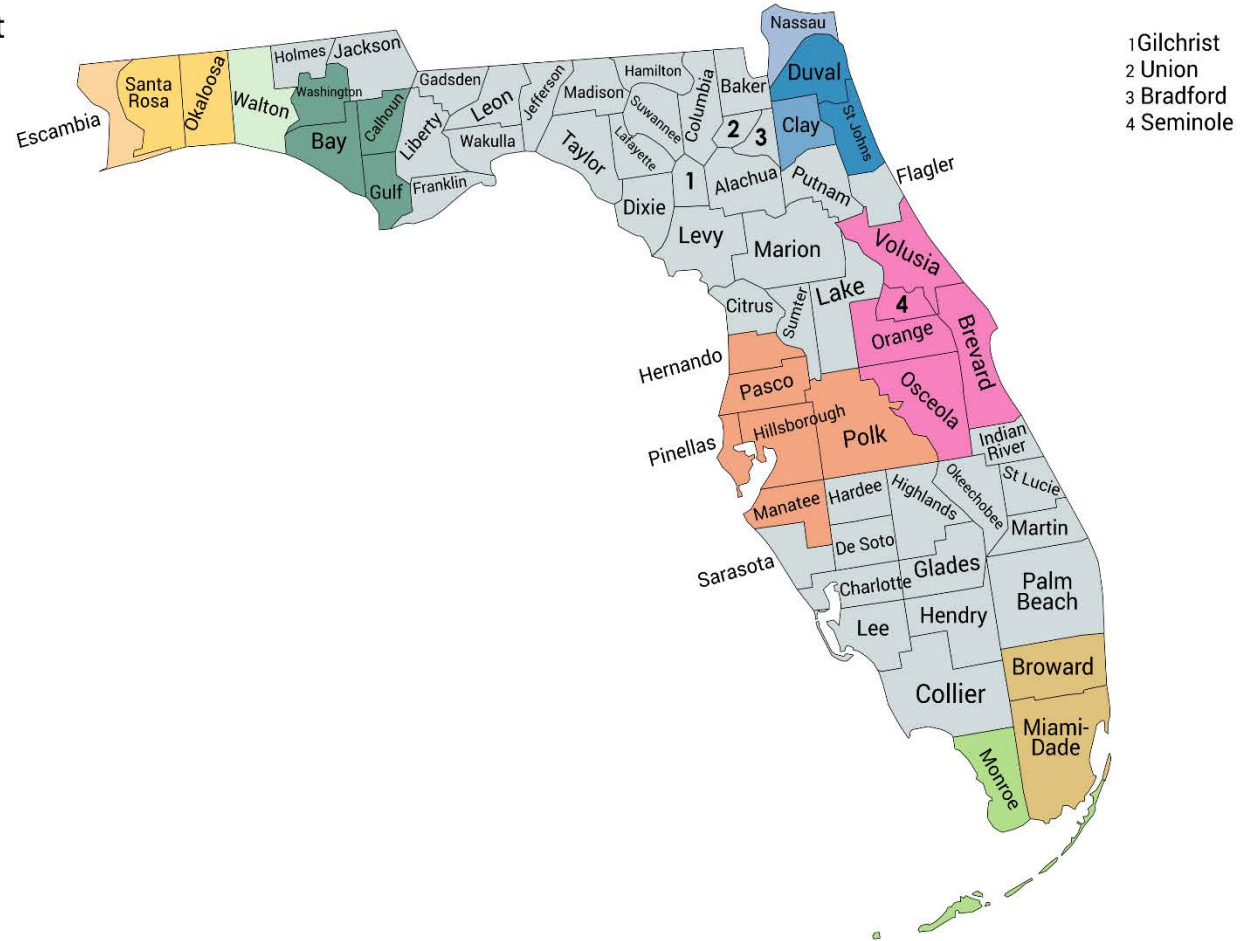
Can the schools contact a School Liaison for special events?

Will the School Liaison help our school with the application process?

Our school is not near a base, who can help us with programing and application?

Military School Liaison AOR

- SL – NAS Pensacola
- SL – Hurlburt AFB and NAS Whiting Field
- SL – Eglin AFB
- SL – Tyndall AFB and NSA Panama City
- SL – NAS Jacksonville
- SL – NS Mayport
- SL – NAS Jacksonville and NS Mayport
- SL – MacDill AFB
- SL – Patrick AFB
- SL – USAG Miami
- SL – NAS Key West



**Military Family Student and Federally Connected Student Code C Enrollment
2019-20, Final Survey 3**

District #	District	Total Enrollment	Military Family Enrollment	Federally Connected Student Enrollment Code C
00	FLORIDA	2,856,876	42,266	16,720
01	ALACHUA	29,832	80	0
02	BAKER	5,029	78	0
03	BAY	25,097	968	669
04	BRADFORD	3,086	7	0
05	BREVARD	73,608	1,869	3,910
06	BROWARD	268,703	1,007	0
07	CALHOUN	2,147	12	0
08	CHARLOTTE	15,988	91	0
09	CITRUS	15,521	233	0
10	CLAY	38,747	4,489	1,697
11	COLLIER	47,931	87	0
12	COLUMBIA	10,113	58	0
13	MIAMI-DADE	346,782	1,275	0
14	DESOTO	4,940	13	0
15	DIXIE	2,233	1	0
16	DUVAL	129,776	6,279	584
17	ESCAMBIA	39,392	2,688	1,351
18	FLAGLER	12,892	250	0
19	FRANKLIN	1,289	1	0
20	GADSDEN	5,180	7	0
21	GILCHRIST	2,819	52	0
22	GLADES	1,808	11	0
23	GULF	1,896	9	0
24	HAMILTON	1,637	6	0
25	HARDEE	5,142	8	0
26	HENDRY	9,456	15	0
27	HERNANDO	22,925	330	0
28	HIGHLANDS	12,239	168	0
29	HILLSBOROUGH	223,472	4,560	2,746
30	HOLMES	3,268	43	0
31	INDIAN RIVER	17,782	15	0
32	JACKSON	6,412	21	0
33	JEFFERSON	753	0	0
34	LAFAYETTE	1,221	2	0
35	LAKE	44,753	246	0
36	LEE	95,749	375	0
37	LEON	33,804	287	0
38	LEVY	5,523	38	0

District #	District	Total Enrollment	Military Family Enrollment	Federally Connected Student Enrollment Code C
39	LIBERTY	1,309	0	0
40	MADISON	2,554	1	0
41	MANATEE	49,820	205	0
42	MARION	43,185	153	0
43	MARTIN	18,921	12	0
44	MONROE	8,882	441	244
45	NASSAU	12,166	147	0
46	OKALOOSA	32,187	5,835	4,103
47	OKEECHOBEE	6,577	12	0
48	ORANGE	209,872	960	0
49	OSCEOLA	70,078	456	0
50	PALM BEACH	196,331	506	50
51	PASCO	76,801	594	0
52	PINELLAS	99,151	325	0
53	POLK	107,895	13	0
54	PUTNAM	10,752	65	0
55	ST. JOHNS	44,125	1,429	0
56	ST. LUCIE	42,052	181	0
57	SANTA ROSA	29,071	3,598	1,366
58	SARASOTA	43,437	180	0
59	SEMINOLE	68,071	765	0
60	SUMTER	8,951	62	0
61	SUWANNEE	5,905	12	0
62	TAYLOR	2,798	1	0
63	UNION	2,382	8	0
64	VOLUSIA	62,819	163	0
65	WAKULLA	5,073	48	0
66	WALTON	10,432	222	0
67	WASHINGTON	3,424	62	0
68	DEAF/BLIND	552	4	0
71	FL VIRTUAL	5,513	53	0
72	FAU LAB SCH	2,632	27	0
73	FSU LAB SCH	2,479	43	0
74	FAMU LAB SCH	600	0	0
75	UF LAB SCH	1,134	4	0



SO WHAT? HERE'S WHAT. NOW WHAT?

Can we identify an organization in remote counties to support the Purple Star School Distinction?

Create a database of resources. If you have information to add to the database, please contact the FDA Family Support Working Group.

Revisit needs after Florida Department of Education finalizes details of PPSofD.